

TDM Code	L	L1
105M 1240	40	10
105M 1250	50	14,5
105M 1260	60	14,5
105M 1270	70	14,5
105M 1275	75	14,5
105M 1280	80	14,5
105M 12100	100	14,5
105M 12120	120	14,5
105M 12150	150	14,5
105M 12200	200	14,5
105M 12250	250	14,5
105M 12300	300	14,5
105M 12400	400	14,5
105M 12500	500	14,5

CONFORMITY
1) DM 174 del 6 Aprile 2004
2) UNI EN ISO 228
3) UNI EN 1254-4

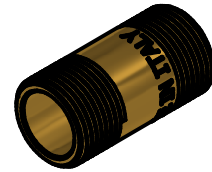
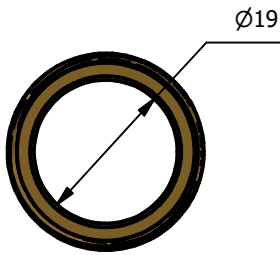
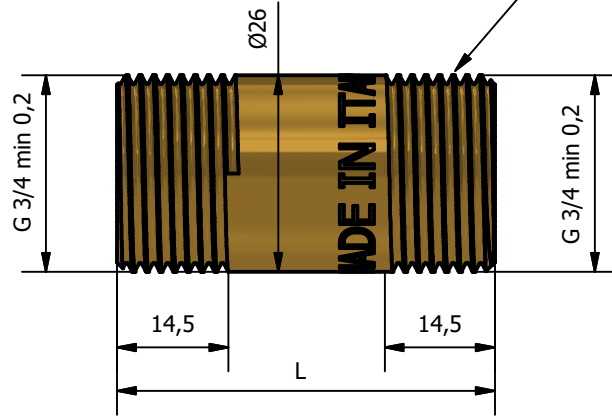
WORKING PRESSURE MAX	16 BAR
WORKING TEMPERATURE MAX	120°C

00	Prima emissione	Delaini M.	03/05/2009
Rev.	Nota Revisione	Approvatore	Data Approvazione
Toll Gen:	JS14	Stato sup.:	Giallo Tornito
Filetto:	ISO 228	Note tecniche:	Da barra 20,5x15
Peso lavorato:		N° stampo:	
Materiale: CW 617N EN12168		Disegnatore: Delaini P.	Data: 03/05/2009
TDM Brass s.r.l via Artigiani , 7-9 25030 Maclodio BS Italy tel +39 030 9972217 fax 030 9787089 www.tdmbrass.it email info@tdmbrass.it			

Codice: 105M 12 scheda

Descrizione: Estensione M/M 1/2

FILETTATURE ZIGRINATE



TDM Code	L
105M 3450	50
105M 3460	60
105M 3470	70
105M 3475	75
105M 3480	80
105M 34100	100
105M 34120	120
105M 34150	150
105M 34200	200
105M 34250	250
105M 34300	300
105M 34400	400
105M 34500	500

CONFORMITY
1) DM 174 del 6 Aprile 2004
2) UNI EN ISO 228
3) UNI EN 1254-4

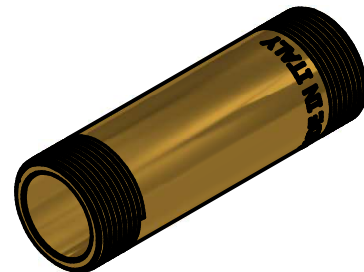
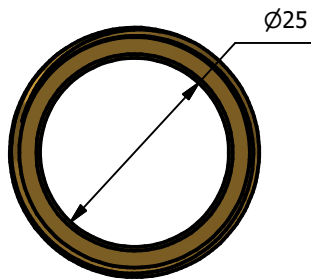
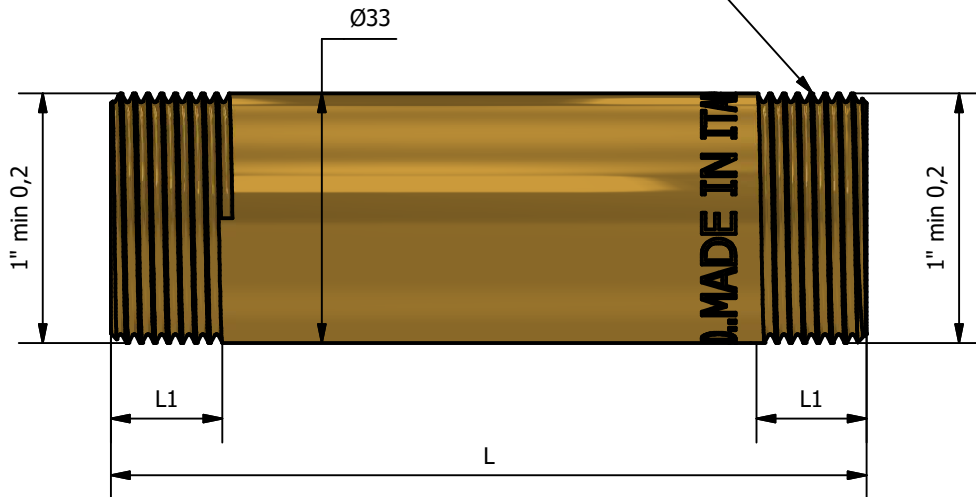
WORKING PRESSURE MAX	16 BAR
WORKING TEMPERATURE MAX	120°C

00	Prima emissione	Delaini M.	03/05/2009
Rev.	Nota Revisione	Approvatore	Data Approvazione
Toll Gen:	JS14	Stato sup.:	Giallo Tornito
Filetto:	ISO 228	Note tecniche:	Da barra 26x19
Peso lavorato:	Peso grezzo:	N° stampo:	
Materiale: CW 617N EN12168		Disegnatore: Delaini P.	Data: 03/05/2009
TDM Brass s.r.l via Artigiani , 7-9 25030 Maclodio BS Italy tel +39 030 9972217 fax 030 9787089 www.tdmbrass.it email info@tdmbrass.it			

Codice: 105M 34 scheda

Descrizione: Extension M/M 3/4

FILETTATURE ZIGRINATE



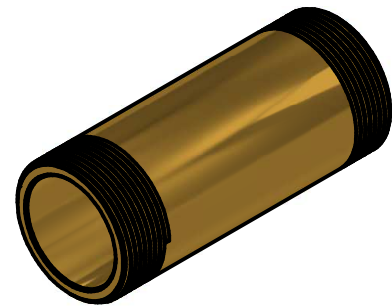
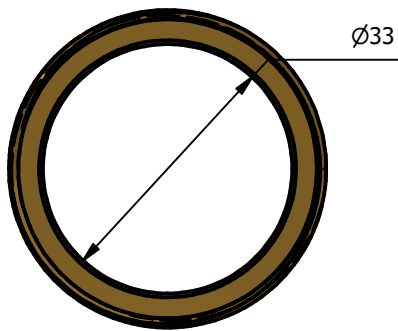
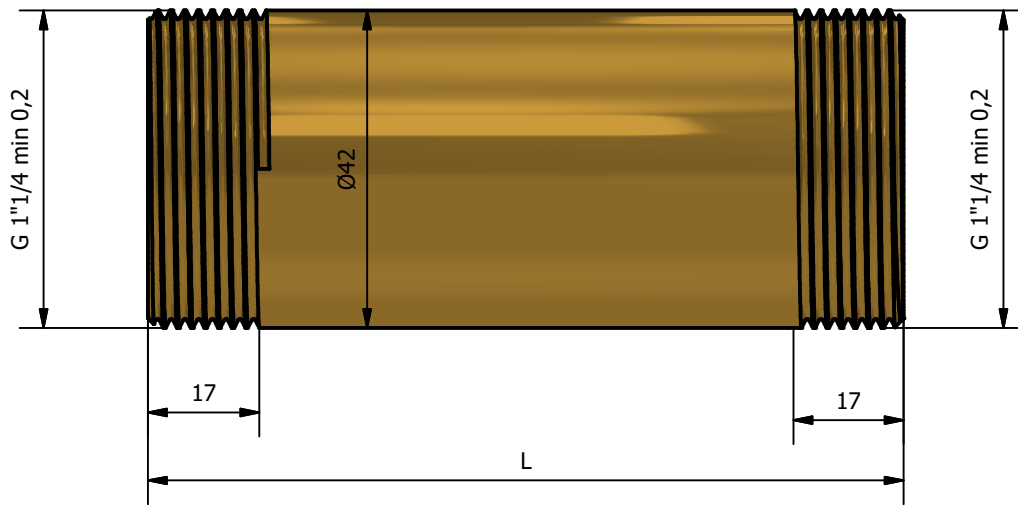
TDM Code	L	L1
105M 0150	50	12,5
105M 0160	60	16,5
105M 0170	70	16,5
105M 0175	75	16,5
105M 0180	80	16,5
105M 01100	100	16,5
105M 01120	120	16,5
105M 01150	150	16,5
105M 01200	200	16,5
105M 01250	250	16,5
105M 01300	300	16,5
105M 01400	400	16,5
105M 01500	500	16,5

CONFORMITY
1) DM 174 del 6 Aprile 2004
2) UNI EN ISO 228
3) UNI EN 1254-4

WORKING PRESSURE MAX	16 BAR
WORKING TEMPERATURE MAX	120°C

00	Prima emissione	Delaini M.	03/05/2009
Rev.	Nota Revisione	Approvatore	Data Approvazione
Toll Gen:	JS14	Stato sup.:	Giallo Tornito
Filetto:	ISO 228	Note tecniche:	Da barra 33x25
Peso lavorato:		N° stampo:	
Codice: 105M 01 scheda		Descrizione: Extension M/M 1"	
Materiale: CW 617N EN12168		Disegnatore:	Data: 03/05/2009
		Delaini P.	
TDM Brass s.r.l via Artigiani, 7-9 25030 Maclodio BS Italy tel +39 030 9972217 fax 030 9787089 www.tdmbrass.it email info@tdmbrass.it			





TDM Code	L
105M P450	50
105M P460	60
105M P470	70
105M P480	80
105M P4100	100
105M P4120	120
105M P4130	130
105M P4150	150
105M P4200	200
105M P4250	250
105M P4300	300
105M P4400	400
105M P4500	500

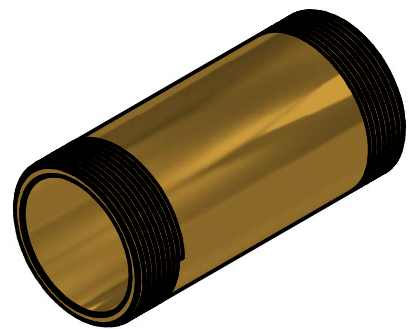
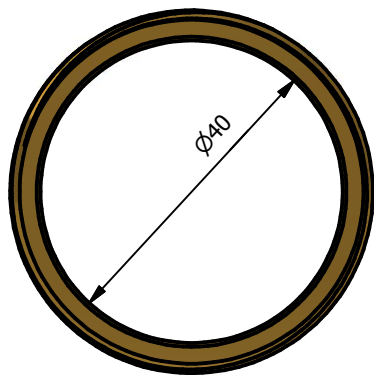
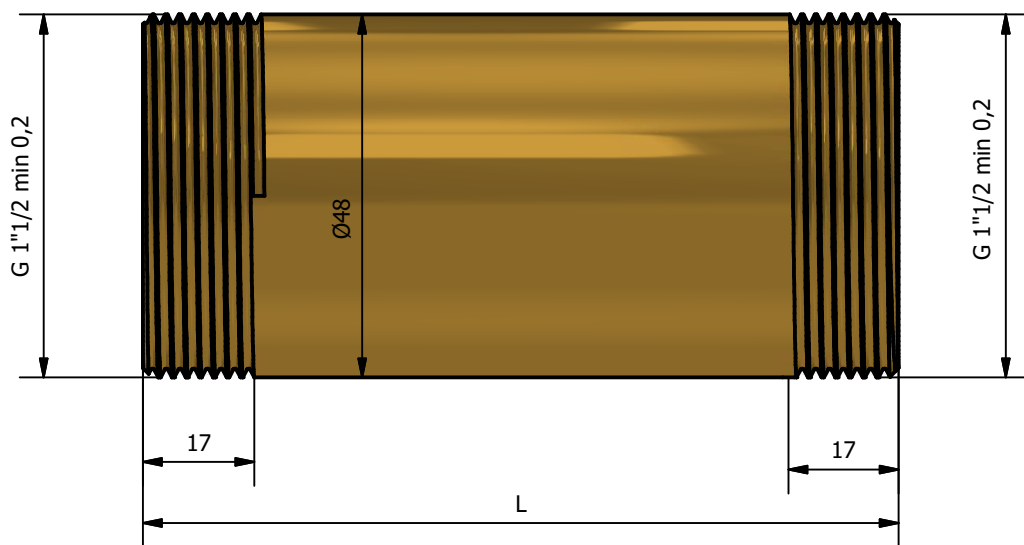
CONFORMITY
1) DM 174 del 6 Aprile 2004
2) UNI EN ISO 228
3) UNI EN 1254-4

WORKING PRESSURE MAX	16 BAR
WORKING TEMPERATURE MAX	120°C

00	Prima emissione	Delaini M.	03/05/2008
Rev.	Nota Revisione	Approvatore	Data Approvazione
Toll Gen:	JS14	Stato sup.:	Giallo Tornito
Filetto:	ISO 228	Note tecniche:	Da barra 42x33
Peso lavorato:	Peso grezzo:	N° stampo:	
Materiale: CW 617N EN12168		Disegnatore: Delaini P.	Data: 03/05/2008
TDM Brass s.r.l via Artigiani, 7-9 25030 Maclodio BS Italy tel +39 030 9972217 fax 030 9787089 www.tdmbrass.it email info@tdmbrass.it			

Codice: 105M P4 scheda

Descrizione: Extension M/M 1"1/4

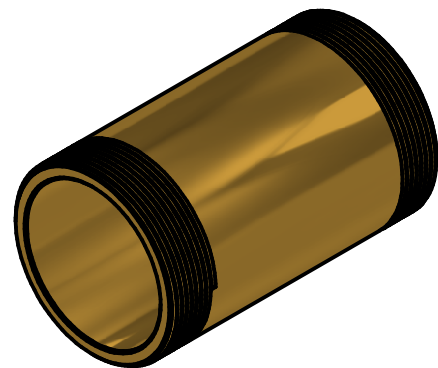
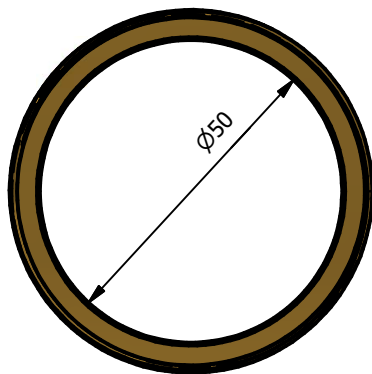
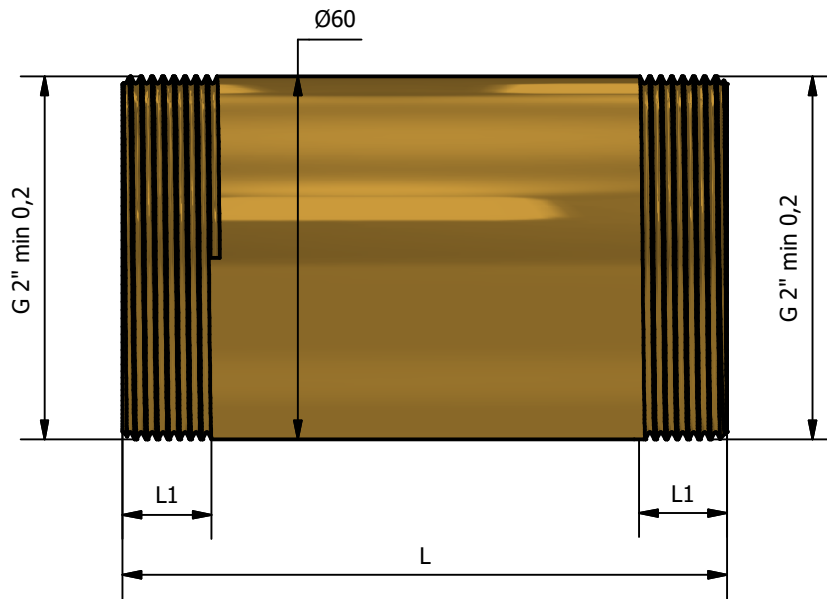


TDM Code	L
105M P250	50
105M P260	60
105M P270	70
105M P280	80
105M P2100	100
105M P2120	120
105M P2130	130
105M P2150	150
105M P2200	200
105M P2250	250
105M P2300	300
105M P2400	400
105M P2500	500

CONFORMITY	
1) DM 174 del 6 Aprile 2004	
2) UNI EN ISO 228	
3) UNI EN 1254-4	

WORKING PRESSURE MAX	10 BAR
WORKING TEMPERATURE MAX	120°C

00	Prima emissione	Delaini M.	03/05/2007
Rev.	Nota Revisione	Approvatore	Data Approvazione
Toll Gen:	JS14	Stato sup.:	Giallo Tornito
Filetto:	ISO 228	Note tecniche:	Da barra 48x40
Peso lavorato:		N° stampo:	
<b>Materiale:</b> CW 617N EN12168		<b>Codice:</b> 105M P2 scheda	
<b>Descrizione:</b> Extension M/M 1"1/2		Disegnatore: Delaini P.	Data: 03/05/2007
TDM Brass s.r.l via Artigiani , 7-9 25030 Maclodio BS Italy tel +39 030 9972217 fax 030 9787089 www.tdmbrass.it email info@tdmbrass.it			



TDM Code	L	L1
105M 0250	50	17
105M 0260	60	20,5
105M 0270	70	20,5
105M 0280	80	20,5
105M 02100	100	20,5
105M 02120	120	20,5
105M 02150	150	20,5
105M 02200	200	20,5
105M 02250	250	20,5
105M 02300	300	20,5

CONFORMITY	
1)	DM 174 del 6 Aprile 2004
2)	UNI EN ISO 228
3)	UNI EN 1254-4

WORKING PRESSURE MAX	10 BAR
WORKING TEMPERATURE MAX	120°C

00	Prima emissione	Delaini M.	03/05/2007
Rev.	Nota Revisione	Approvatore	Data Approvazione
Toll Gen:	JS14	Stato sup.:	Giallo Tornito
Filetto:	ISO 228	Note tecniche:	Da barra 60x50
Peso lavorato:		N° stampo:	
Materiale: CW 617N EN12168		Disegnatore: Delaini P.	Data: 03/05/2007
TDM Brass s.r.l via Artigiani , 7-9 25030 Maclodio BS Italy tel +39 030 9972217 fax 030 9787089 www.tdmbrass.it email info@tdmbrass.it			

Codice: 105M 02 scheda

Descrizione: Extension M/M 2"